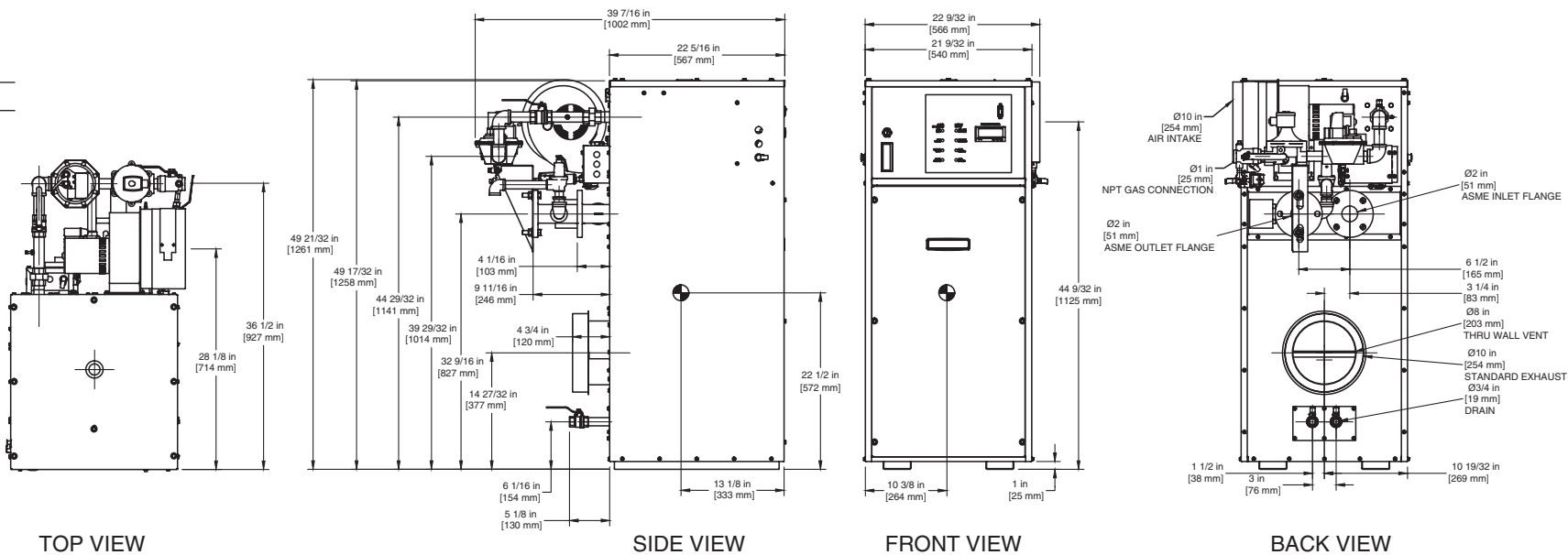


INDOOR UNIT

RSUB-65 REV D

CODE OPTIONS

CSD-1	Manual Reset LWCO
-------	-------------------



- Notes:
- 1. Dimensions are approximate and should not be used to "rough-in" equipment.
 - 2. Dimensions are subject to change without notice.

BOILER CERTIFIED RATINGS & CAPACITIES

Fuel Type	Natural/Propane Gas	Boiler FLA	5.3*
Input BTU/hr.	750,000 / 220 kW	Min. Gas Pressure Required	5"W.C.**
Output BTU/hr.	637,500 / 187 kW	Max. Gas Pressure Allowed	14"W.C.
Electrical Requirements	120 VAC / 1 ph / 60 hz	Operating Weight	468 lbs. / 212 kg.

BOILER TEMPERATURE RISE / PRESSURE DROP

20°F / 11.1°C				25°F / 13.9°C				30°F / 16.7°C				35°F / 19.4°C			
Flow Rate		Pressure Drop		Flow Rate		Pressure Drop		Flow Rate		Pressure Drop		Flow Rate		Pressure Drop	
GPM	L/s	Ft	kPa	GPM	L/s	Ft	kPa	GPM	L/s	Ft	kPa	GPM	L/s	Ft	kPa
63.8	4.0	1.57	4.6	51.0	3.2	1.04	3.1	42.5	2.7	0.70	2.2	36.4	2.3	0.60	1.6

BOILER / WATER HEATER TRIM & CONTROLS

Main Gas Valve	V4944B	Main Ball Valve	1"
Firing Valve	1"	Pilot Regulator	White-Rodgers 25M
Safety Valve	ASCO L8214G 1"	Air Switch	HUBA
Ignition Control	Honeywell RM7897C	Blower Motor	Fasco 1/4 hp - FLA 3.6
Operating Control (FB/FW)	Jumo	Relief Valve - FB	3/4" x 3/4" set @ 50 psi
High Limit	Honeywell L4008E	Relief Valve - FW	3/4" x 3/4" set @ 125 psi
		Flow Switch	TACO

WATER HEATER HOURLY RECOVERY CAPACITY (GPH & LPH)

40°F	22°C	60°F	33°C	80°F	44°C	100°F	56°C	120°F	67°C	140°F	78°C
1877	7096	1252	4731	939	3548	751	2838	626	2365	536	2027

Boilers & Water Heaters not available for sale in Canada due to NRCan regulations.

A.S.M.E.

ASME Sect IV Htg Surface	97.79 Sq. Ft. / 9.08 Sq. M.	Design Data	Max. 160 psig & 250°F
Water Volume	3.7 gal / 14.0 Liters		

- * Add circulator amps.
** For incoming gas pressures lower than 5" W.C. natural or 11" W.C. propane, consult factory.

REP FIRM _____

SUBMITTED BY _____

JOB NAME _____

ARCHITECT _____

ENGINEER _____

CONTRACTOR _____

DATE _____

FUTERA II 750

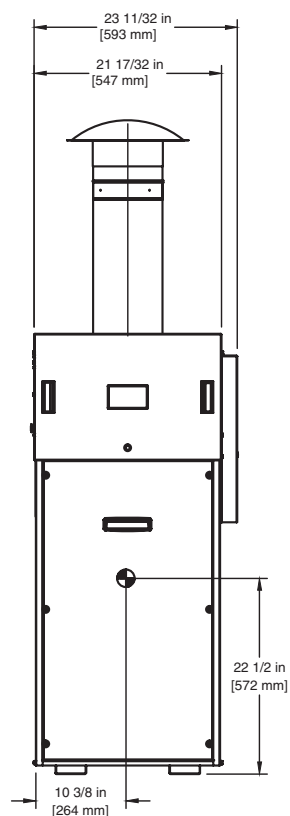
Category I or Category III Appliance
(see Installation and Operation Manual for venting information)

RBI® A Division of Mestek, Inc.
Westfield, MA 01085
(413) 568-9571

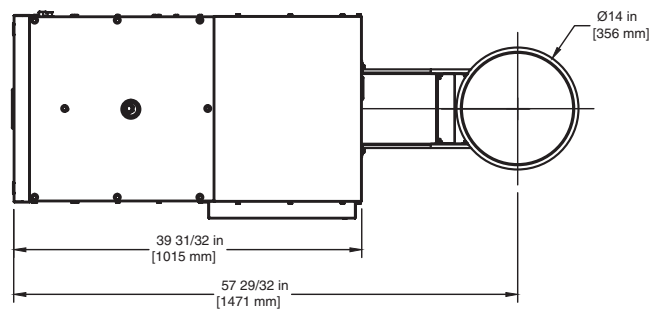
RELIABLE. BOLD. INNOVATIVE.

OUTDOOR UNIT

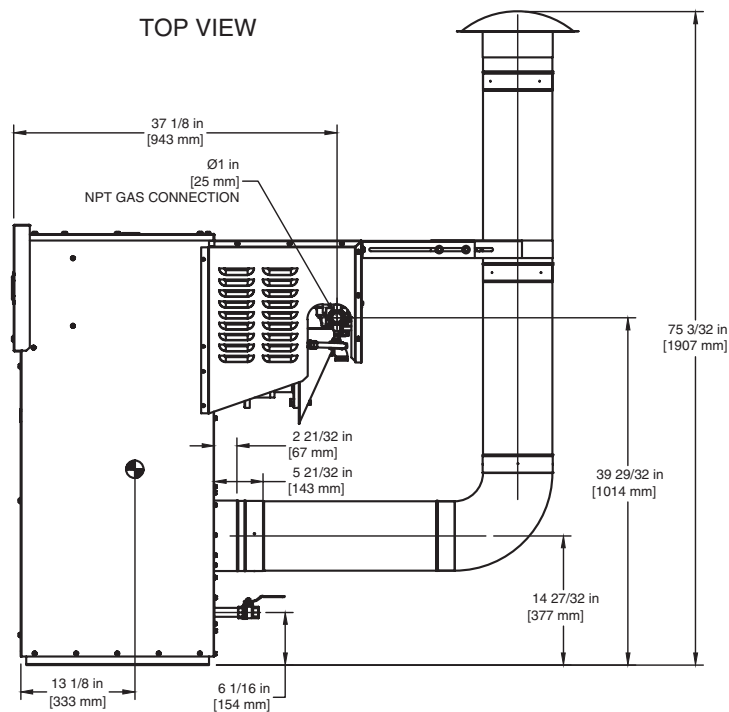
RSUB-152



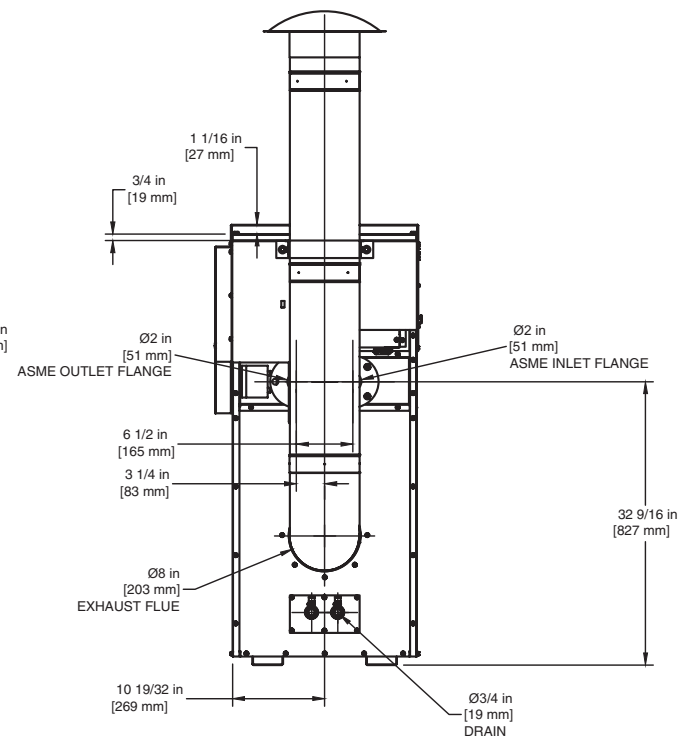
FRONT VIEW



TOP VIEW



SIDE VIEW



BACK VIEW

FUTERA II 750

Boilers & Water Heaters not available for sale in Canada due to NRCAN regulations.

Notes:

1. Dimensions are approximate and should not be used to "rough-in" equipment.
2. Dimensions are subject to change without notice.